

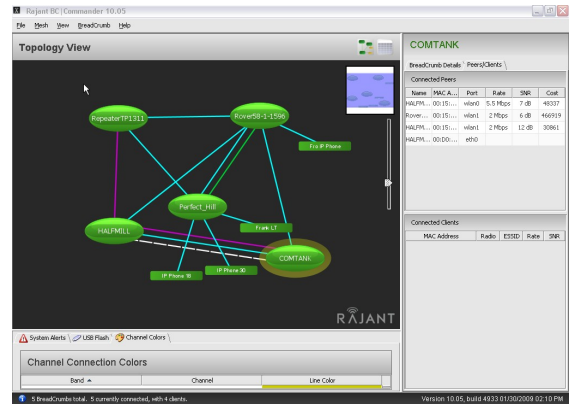
BC|Commander® and BC|Commander® Enterprise BreadCrumb® Network Management Tool

Rajant BC|Commander®

BC|Commander® is Rajant's management and monitoring application for BreadCrumb®-based wireless mesh networks. Available for both Microsoft Windows and Linux workstations, BC|Commander® provides a global view of your network with an easy-to-use graphical interface.

BC|Commander® Features

- Secure, encrypted link to each BreadCrumb® in the network.
- Point-and-click BreadCrumb® configuration.
- Real-time network topology view.
- Wireless client display.
- RF status display for all mesh and client links.
- Ability to remotely update BreadCrumb® firmware (most models).
- Configuration of client link security up to WPA2-PSK.
- Control of all other configurable BreadCrumb® features, including radio settings, mesh encryption and authentication, VLANs, and InstaMesh® settings.



BC|Commander® Enterprise

For large or complex networks, BC|Commander® Enterprise Edition provides enhanced functionality, including:

- Configuration of WPA/WPA2 Enterprise (802.11i Enterprise) client authentication.
- Real-time mapping of BreadCrumb® devices with user-customizable map images (with optional GPS receiver).
- InstaMesh® trace to examine paths taken through the mesh.
- Peer link filters to customize the network topology view and highlight links with specific characteristics.

